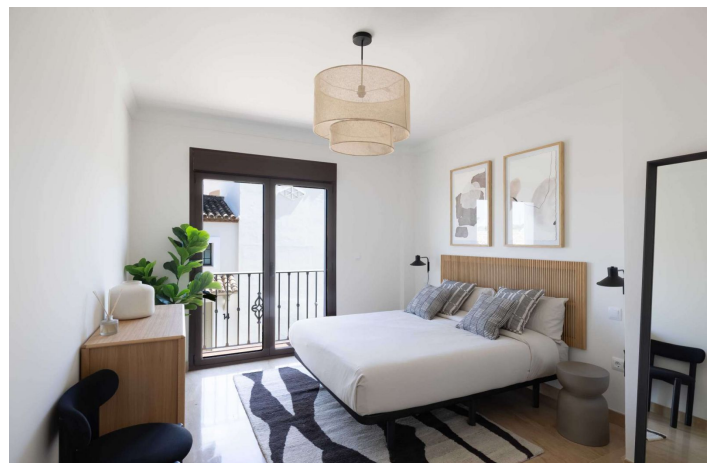




## Townhouse for sale in Valle Romano, Estepona

470,250 - 593,750 €

Reference: R5049157 Bedrooms: 3 Bathrooms: 2 Build Size: 230m<sup>2</sup> - 263m<sup>2</sup> Terrace: 15m<sup>2</sup> - 79m<sup>2</sup>





---

## Costa del Sol, Valle Romano

Welcome to the residential complex in Estepona, your new home on the Costa del Sol. The residential development is an exclusive promotion of 87 single-family homes ready to move into, located in the west area of Estepona, next to the new High Resolution Hospital and right on the golf course. This area, undergoing significant urban expansion, is becoming one of the most prestigious and promising residential destinations on the Costa del Sol. The homes, spread over two floors plus a basement, have three bedrooms and two bathrooms, large private terraces, and in some cases, a solarium with stunning views of the sea and the golf course. Designed in a modern style inspired by Mediterranean architecture, they offer bright rooms, marble floors, double-glazed windows, electric blinds, and a whirlpool bathtub designed for your wellbeing and comfort. The residential complex includes exclusive common areas such as indoor and outdoor swimming pools, a spa and gym, as well as redesigned gardens that bring harmony and wellbeing. The entire development is being completely renovated, both inside and out, to offer a high-quality, functional, and elegant environment. Thanks to its strategic location, surrounded by nature and perfectly connected to Estepona, Marbella, Sotogrande, and the airports of Málaga and Gibraltar, this development represents a unique investment and lifestyle opportunity on the Costa del Sol. Immediate delivery.



## Features:

### Features

Covered Terrace  
Private Terrace  
Storage Room  
Marble Flooring  
Double Glazing  
Fitted Wardrobes  
Gym  
Basement

### Views

Sea  
Panoramic  
Country  
Golf

### Pool

Communal  
Indoor

### Security

Gated Complex  
Entry Phone

### Orientation

East  
South East

### Setting

Close To Golf  
Close To Sea  
Close To Shops  
Close To Town  
Close To Schools  
Frontline Golf

### Kitchen

Kitchen-Lounge

### Parking

Underground  
Garage  
Private

### Climate Control

Pre Installed A/C

### Condition

New Construction

### Garden

Communal

### Category

New Development