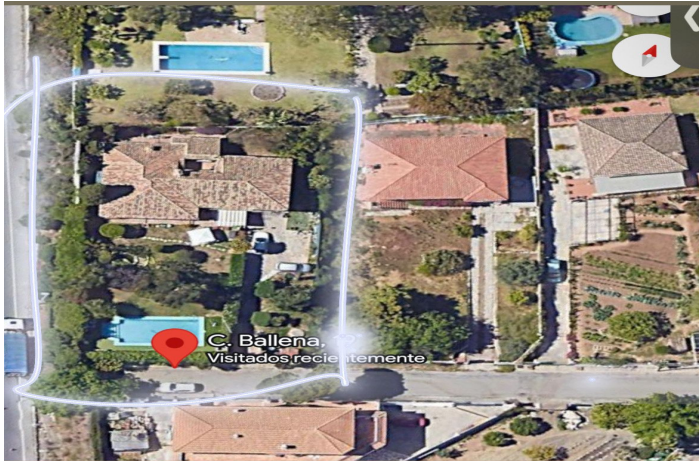




Semi-Detached House for sale in Nueva Andalucía, Marbella

849,000 €

Reference: R5039161 Bedrooms: 5 Bathrooms: 4 Plot Size: 1,193m² Build Size: 336m²





Costa del Sol, Marbella

This impressive CLASSIC semi-detached villa is WELL located in the desirable area of Marbella East, Malaga. Offering a generous built area of 336m² on a substantial plot of 1,193m², the property is ideally situated 15 min walk close to the beach, beaches, shops, and the vibrant town centre. With five bedrooms and four bathrooms, this villa provides ample space for family living or entertaining guests. THERE IS A PROJECT FOR COVER THE NOISE FROM HIGH WAY. WE HAVE THE PAPERS AND PROJECT. The villa boasts a range of attractive features, including a private swimming pool, private garden, and a secure private garage. The interior layout is thoughtfully designed, comprising a spacious living room with a fireplace, a guest room, a guest toilet, and a dedicated laundry room. Additional highlights include a basement, a gym for fitness enthusiasts, and a guest apartment, making the property suitable for accommodating visitors or extended family. Pets are welcome, and the ground floor patio offers further outdoor enjoyment. Outdoor living is enhanced by a private terrace, covered terrace, and balcony, all of which provide delightful views of the garden, pool, mountains, and partial sea vistas. The villa benefits from proximity to local amenities and the coast, making it an excellent choice for those seeking convenience and lifestyle. Optional furniture is available for those wishing to move in with ease. While the property is in need of renovation, it presents a unique opportunity to personalise and modernise according to individual tastes. With its spacious accommodation, versatile features, and prime location, this semi-detached villa in Bello Horizonte represents a compelling prospect for discerning buyers seeking a substantial home in Marbella East.



Features:

Features

Covered Terrace
Private Terrace
Gym
Guest Apartment
Basement

Views

Sea
Mountain
Garden
Pool

Pool

Private

Parking

Private
More Than One

Orientation

South West

Setting

Close To Sea
Close To Shops
Close To Town

Furniture

Optional

Climate Control

Fireplace

Condition

Renovation Required

Garden

Private