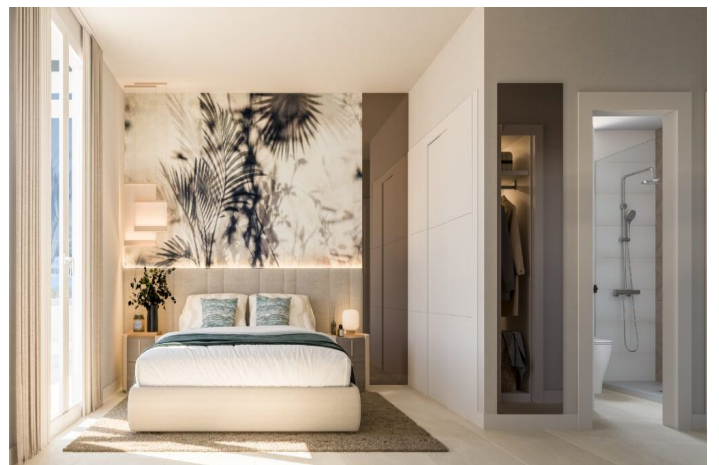




Ground Floor Apartment for sale in Estepona, Estepona 389,000 - 467,000 €

Reference: R4993729 Bedrooms: 2 - 3 Bathrooms: 2 - 2 Plot Size: 78m² - 90m² Build Size: 91m² - 118m² Terrace: 29m² - 113m²





Costa del Sol, Estepona

This is an attractive new development comprising 40 exclusive homes, distributed in 1, 2 and 3 bedroom options. This complete residential complex gated to guarantee privacy and security goes beyond the conventional, providing a unique experience of wellbeing and comfort. Each home is designed for maximum convenience, incorporating a garage and storage room to optimise space and meet the needs of its residents. The carefully integrated terraces offer not only a space to unwind but also a connection and an attractive continuity between the spacious interior and exterior spaces. The comfort doesn't stop there; the communal areas elevate the living experience. Relax in the refreshing swimming pool, enjoy the landscaped garden areas that complete the aesthetics and functionality of the complex, and keep active in the gym equipped with everything you need to take care of your wellbeing. A promotion that will make your everyday life especially pleasant! Your new life in the centre of Estepona, Malaga.

This area, strategically located in the heart of the Costa del Sol, connects directly with Marbella, Malaga and other nearby urban areas, consolidating itself as a reference in urban development in the region. Its range of services, dream beaches and excellent connections make Estepona one of the best options for those looking for a comfortable, modern and well-connected life. The proximity to key infrastructures such as the Estepona Hospital, the renovated port area, modern educational centres and the vibrant old town, known for its traditional charm and rich cultural offerings, are just some of the reasons why Estepona is booming - the best is yet to come!



Features:

Features

Covered Terrace
Lift
Private Terrace
Storage Room
Double Glazing
Fitted Wardrobes
Solarium
Gym

Views

Garden

Pool

Communal

Security

Gated Complex
Entry Phone

Orientation

North
West

Setting

Close To Port
Close To Sea
Close To Shops
Close To Schools

Kitchen

Kitchen-Lounge

Parking

Garage
Private

Climate Control

Cold A/C
Hot A/C

Condition

New Construction

Garden

Communal

Category

New Development