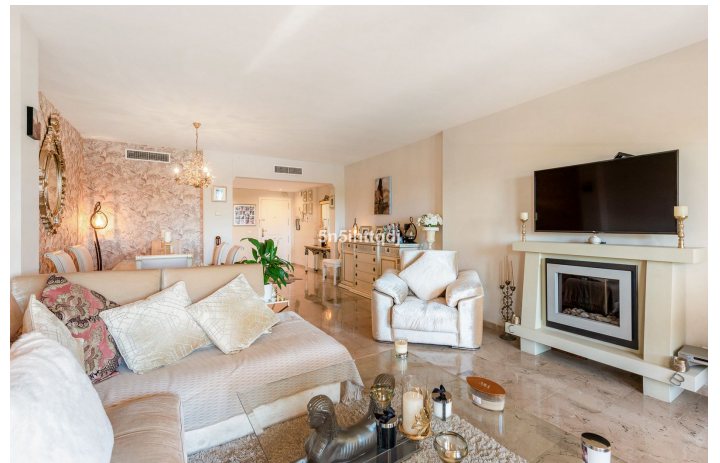




Middle Floor Apartment for sale in Nueva Andalucía, Marbella

825,000 €

Reference: R4727824 Bedrooms: 3 Bathrooms: 3 Build Size: 137m² Terrace: 45m²





Costa del Sol, Nueva Andalucía

This gorgeous apartment in the peaceful green urbanisation of Cumbres del Rodeo offers a quiet, picturesque lifestyle overlooking the sea and mountains.

The highlight of the residence is the beautiful, spacious southwest-facing terrace that boasts spectacular views in a completely private environment, complemented by an electric retractable sunshade. It offers three distinct spaces perfect for al fresco dining and an undercover sitting area, with the western corner offering the ideal sunbathing spot with stunning views.

The entry foyer leads to a spacious lounge and dining area that opens to the main terrace, perfect for Mediterranean outdoor living. Three well-appointed bedrooms offer fitted wardrobes, with the main housing an en-suite with double vanity, shower over bath and opening onto the solarium and its vistas. The second bedroom opens to the covered terrace, while the third smaller bedroom offers a private green outlook.

The fully fitted kitchen boasts black marble worktops beside a separate laundry service room. A guest bathroom offers another shower over bath, and a separate toilet. The home includes marble floors, bathroom underfloor heating, blackout roller shutters, an alarm system, and two garage spaces located near the lift.

The luscious Andalusian style community is immaculately maintained, accented with fountains and voluptuous greenery that provides a relaxing, peaceful atmosphere. Stone paths lead through beautiful gardens to the freeform swimming pool with mountain views and sun lounges, open throughout the year.

Conveniently located near the diverse range of high-end retail, schools, beaches and nightlife offered in Nueva Andalucía, Puerto Banus and Marbella areas, this beautiful apartment offers a relaxing lifestyle in a stunning, peaceful location.



Features:

Features

Covered Terrace
Lift
Near Transport
Private Terrace
Marble Flooring
Double Glazing
Fitted Wardrobes
Utility Room

Views

Sea
Mountain
Panoramic
Country

Pool

Communal

Garden

Communal

Orientation

South West

Setting

Close To Golf
Close To Port
Close To Sea
Close To Shops
Close To Town
Close To Schools

Furniture

Optional

Security

Alarm System

Climate Control

Air Conditioning
U/F/H Bathrooms

Condition

Excellent

Kitchen

Fully Fitted

Parking

Communal