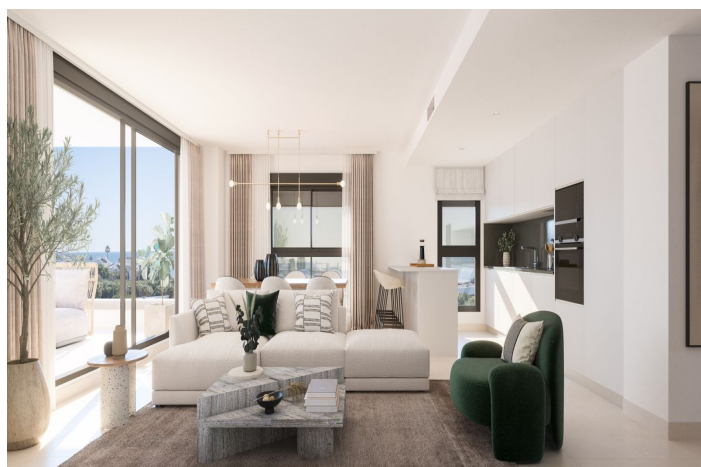




## Ground Floor Apartment for sale in Estepona, Estepona 525,000 - 575,000 €

Reference: R4913860 Bedrooms: 3 - 3 Bathrooms: 2 Plot Size: 24m<sup>2</sup> - 107m<sup>2</sup> Build Size: 91m<sup>2</sup> - 107m<sup>2</sup> Terrace: 66m<sup>2</sup> - 95m<sup>2</sup>





---

## Costa del Sol, Estepona

New residential project of 2 and 3 bedroom apartments located in Estepona where you will enjoy stunning sea views. With its cobbled streets, whitewashed buildings with flowers Estepona has a unique charm that has made it a popular destination. In the surrounding areas are some of the most prestigious golf courses in Europe, the most complete offering of restaurants and hotels, fantastic beaches and exclusive commercial areas. This development is characterised by its excellent travel links, as it's only 5 minutes by car from Estepona, 10 minutes from Puerto Banús and 20 from Marbella. The development is made up of 3 three-storey blocks with: • Ground floor with garden and terraces • Middle floor • Penthouses with a solarium & large terraces The residential has underground parking and storage rooms. The project offers homes designed to provide maximum comfort to their owners. With a selection of top quality materials and a very careful design, this is a development that will not go unnoticed. It stands out for its spacious interiors with large windows through which you can enjoy the wonderful sea views and it also receives natural light. The communal areas of this residential have been designed to provide a space in which to enjoy and relax. You will find: • Spacious green areas ideal for resting and disconnecting from routine • Communal swimming pool with an avant-garde design • Chill Out area • Coworking Space • Gym



## Features:

### Features

Covered Terrace  
Lift  
Private Terrace  
Storage Room  
Ensuite Bathroom  
Fitted Wardrobes  
Solarium  
WiFi  
Gym  
Utility Room  
Basement

### Views

Sea  
Panoramic  
Garden  
Pool

### Pool

Communal

### Security

Entry Phone

### Category

New Development

### Orientation

South East  
North East  
South West  
North West

### Setting

Beachside  
Close To Sea  
Close To Shops  
Close To Town  
Close To Schools

### Kitchen

Fully Fitted  
Kitchen-Lounge

### Parking

Underground  
Communal

### Climate Control

Cold A/C  
Hot A/C

### Condition

New Construction

### Garden

Communal  
Private

### Utilities

Photovoltaic solar panels