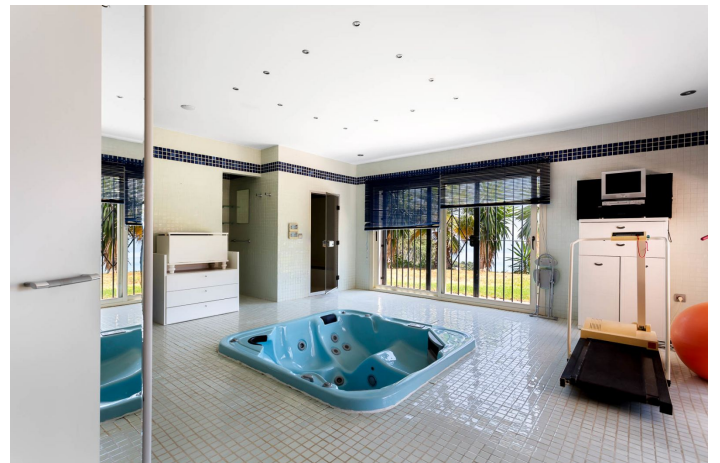
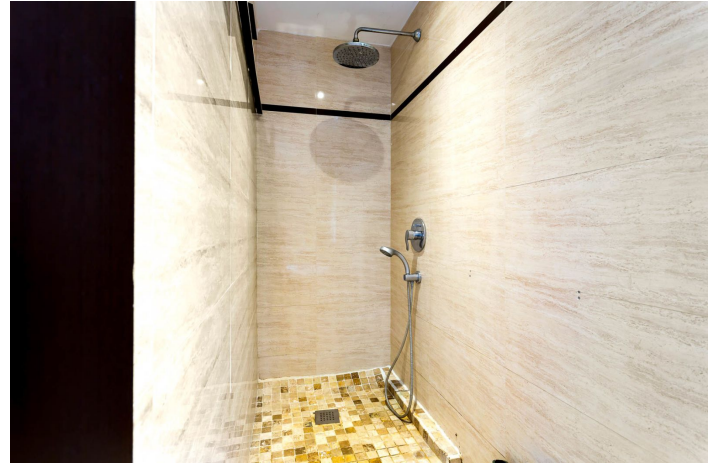




Detached Villa for sale in Benalmadena Costa, Benalmádena

2,249,000 €

Reference: R3662414 Bedrooms: 7 Bathrooms: 5 Plot Size: 10,071m² Build Size: 737m² Terrace: 139m²





Costa del Sol, Benalmadena Costa

A very rare opportunity not to be missed! This is the most unique property in Benalmadena Costa. Set on just over 10.000m² of grounds this elegant detached villa has endless amounts of potential.

Distributed over two levels the villa offers a total of 7 bedrooms including a separate 2 bedroom guest house. The villa enjoys an infinity pool overlooking the Mediterranean Sea. The land has several luscious fruit trees including avocado, orange and lemon trees. The house comes with a license for horses, ideal for horse lovers. The house could easily be turned into a boutique retreat.

This spacious villa of 737 sqm also has legal permission for more meters to be built. This stunning villa is situated on the slope of the hill and takes full advantage of its position offering spectacular views overlooking the Mediterranean and with a high level of privacy. It is situated on a generous plot of 10000 sqm It is a secured property that has a fenced border and gated entrance with a private road that leads to the villa. This generous plot has plenty of greenery as well as fruit trees. The plot is located in a residential neighborhood that mainly consists of detached villas. It makes it a privileged and very private area with almost no traffic. Ideal location for peace and tranquility.

737 sqm detached villa has 6 bedrooms, 5 bathrooms, separate kitchen, spa, and terraces

This south facing villa is distributed between 2 levels. At the entrance it has a glazed interior patio that lets the sun in and makes the lobby very bright, it is also handy in winter to have so much light coming in to keep interiors warm. At the street level, there are bedrooms, a Spa with Turkish sauna, an independent kitchen, and a spacious living room. Upstairs there are more bedrooms with terraces and open sea views. There is an entrance to the garden with an infinity swimming pool through the lobby. There is also an exterior separate guest apartment that has 2 bedrooms and a living room with open plan kitchen. It is a property from 2003 that is well maintained and is ready to be moved in.



Features:

Features

Covered Terrace
Private Terrace
Storage Room
Ensuite Bathroom
Marble Flooring
Double Glazing
Gym
Sauna
Guest Apartment
Guest House
Utility Room
Jacuzzi
Staff Accommodation

Views

Sea
Panoramic
Garden
Pool
Beach

Pool

Private

Garden

Private

Utilities

Electricity
Drinkable Water
Telephone

Orientation

South

Setting

Urbanisation
Close To Sea
Close To Shops
Close To Town
Close To Schools

Furniture

Optional

Security

Alarm System
Entry Phone

Category

Investment

Climate Control

Air Conditioning
Cold A/C
Hot A/C
Fireplace
U/F/H Bathrooms

Condition

Good
Excellent

Kitchen

Fully Fitted

Parking

Garage
Private
Covered
More Than One